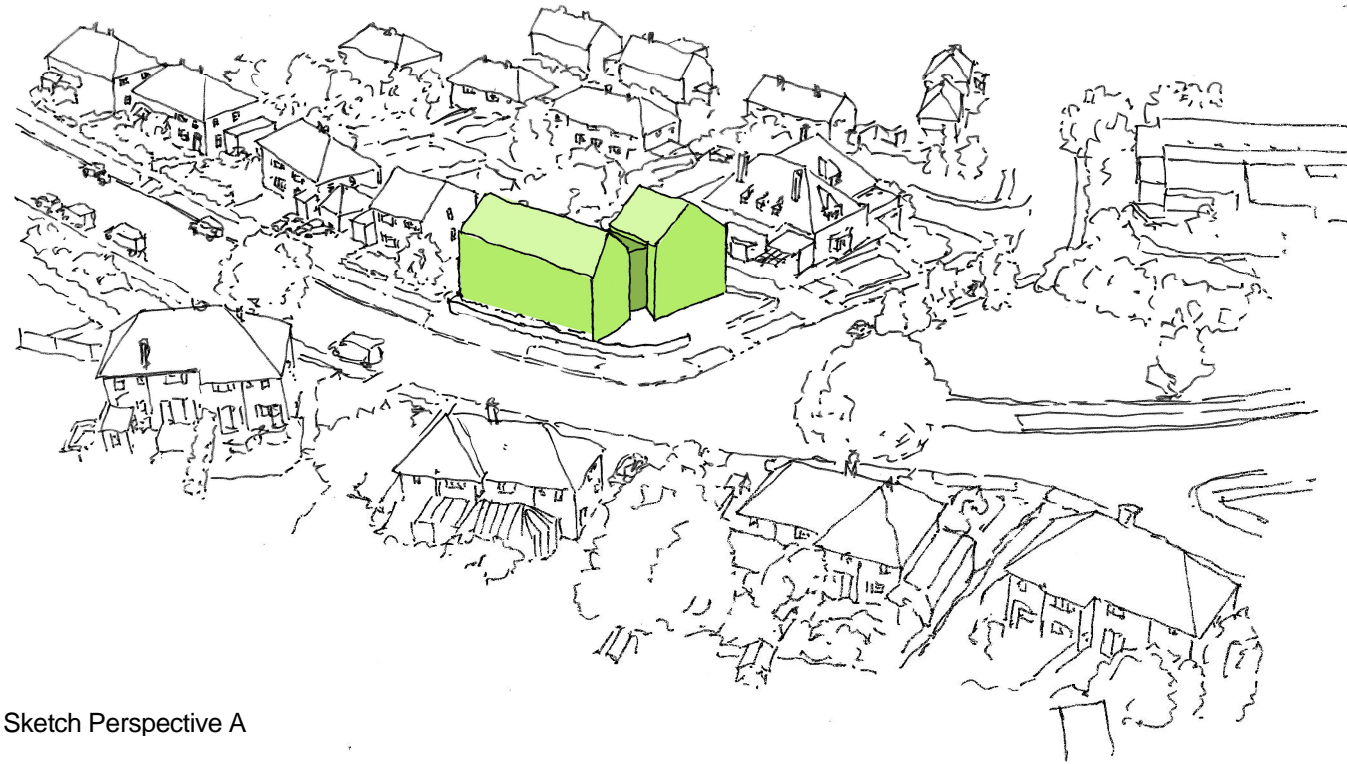
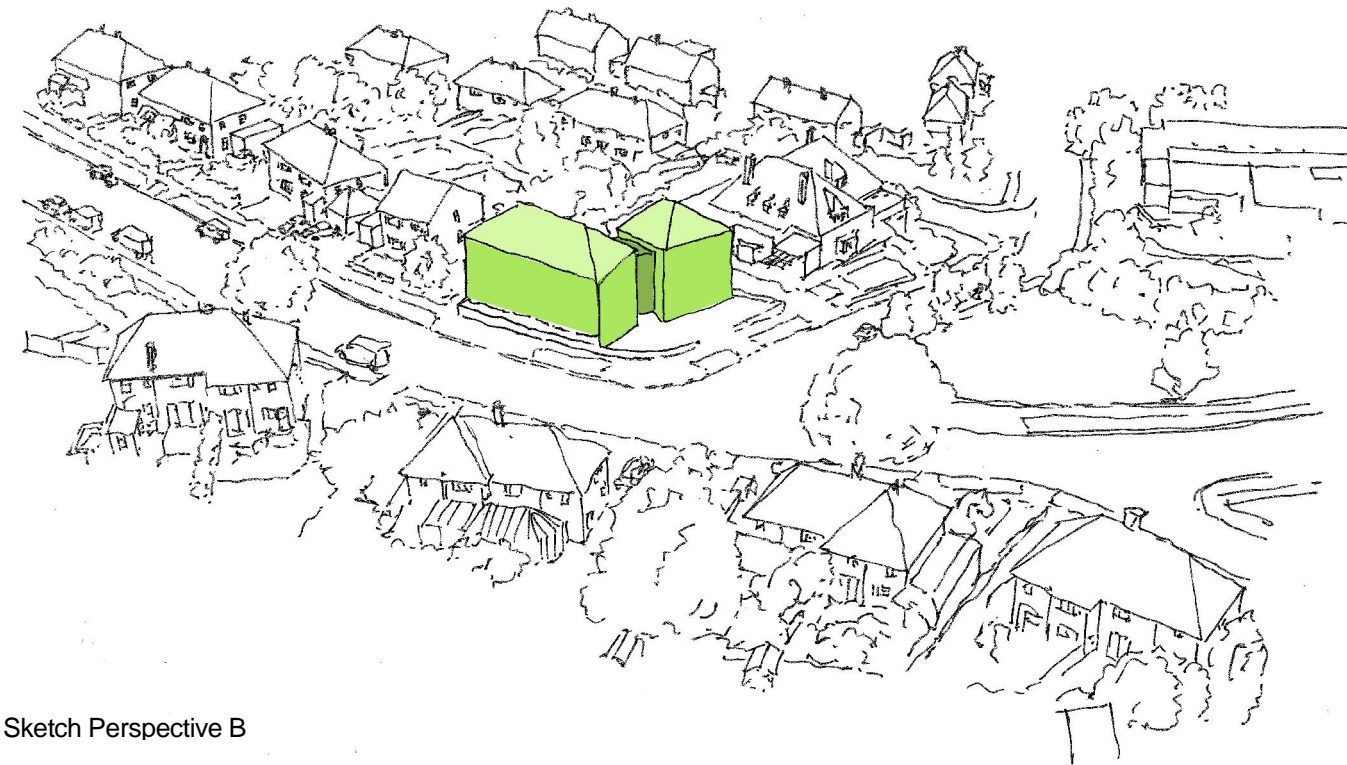


## 4.0 Development Options

Option 5 - New Build 'Move-on' Scheme B / Massing (NB: IDENTICAL TO OPTION 2)



Sketch Perspective A



Sketch Perspective B

### Massing

The fragmentation of the building form breaks the overall mass down into those comparable with the surrounding residential properties and enables a varied roofscape in line with the local vernacular style.

By exploiting the changes in level we are able to create a three storey building facing County Oak Avenue, with two storeys facing Carden Hill, respecting the ridge line of the existing house adjacent. The structures on County Oak Avenue step down as the hill descends towards Carden Avenue. The height of the proposed block adjacent to the pub sits relative to its position on the hill.

We propose a pitched roof on the two 'habitable' blocks, linked by a highly glazed circulation core with a flat roof to ease the junction between the separately oriented masses.

The two sketches adjacent explore the impact that the roofscape could have on the development.

